



PRINCE SHRI VENKATESWARA ARTS AND SCIENCE COLLEGE

Gowrivalakam, Chennai-600073.

Affiliated to University of Madras, ISO 9001:2015 Certified Institution

ALUMNI FEEDBACK ON CURRICULUM, INFRASTRUCTURE FACILITIES & AMBIENCE OF THE INSTITUTION – ANALYSIS REPORT

Academic Year

2020-21

Department

B.Sc. Biochemistry

Number of Respondents

39

Feedback Rate: Strongly Agree (5), Agree (4), Neutral (3), Disagree (2), Strongly Disagree (1)

S. No	Feedback on Curriculum, infrastructure facilities & ambience of the institution	5	4	3	2	1
1	Rate the appropriateness of curriculum and syllabus content for placement/ higher education. (Related to curriculum)	33	4	2	0	0
2	Rate the effectiveness of the academic curriculum for the development of analytical and problem-solving skills (Related to curriculum)	38	0	1	0	0
3	Rate the curriculum and institution activities for making the students industry ready at the end of the programme (Related to curriculum)	29	9	1	0	0
4	Rate the curriculum for the improvement of creative thinking skills and knowledge / scope of the syllabus in enhancing entrepreneurship skills/ lifelong learning/ human values and ethics. (Related to Academic Performance)	33	1	5	0	0
5	Rate the faculty and the teaching learning process in the department and institution (Related to curriculum and academic performance)	32	4	3	0	0



PRINCE SHRI VENKATESWARA ARTS AND SCIENCE COLLEGE

Gowrivakkam, Chennai-600073.

Affiliated to University of Madras, ISO 9001:2015 Certified Institution

6	Rate the placement opportunities and career guidance programs provided by the Placement Cell (Related to academic performance)	30	5	3	0	1
7	Rate the laboratory facilities and the laboratory course experiments relevancy to real time applications (Related to infrastructure and ambience of the institution)	33	4	2	0	0
8	Rate the adequacy of library and research Centre facilities (Related to infrastructure of the institution)	38	0	1	0	0
9	Rate the sports and cultural facilities and the related activities by the institution (Related to infrastructure and ambience of the institution)	33	0	6	0	0
10	Rate the opportunities provided by the institute to participate in co-curricular and extracurricular activities (Related to ambience of the institution)	37	1	0	1	0
11	Rate the conducive and peaceful overall environment provided by the institution (Related to ambience of the institution)	35	2	2	0	0



B. Kalpana
PRINCIPAL
PRINCE SHRI VENKATESHWARA
ARTS AND SCIENCE COLLEGE
GOWRIVAKKAM, CHENNAI-600 073.



PRINCE SHRI VENKATESWARA ARTS AND SCIENCE COLLEGE

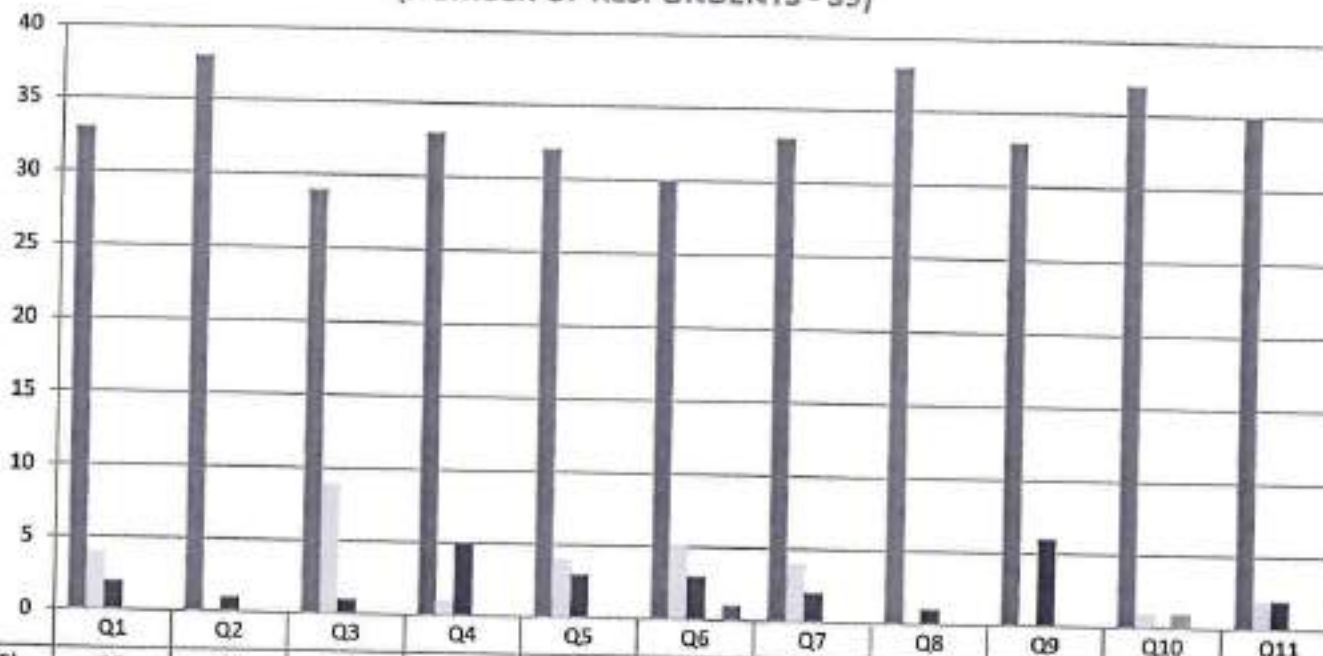
Gowrivakkam, Chennai-600073.

Affiliated to University of Madras, ISO 9001:2015 Certified Institution

ALUMNI FEEDBACK ON CURRICULUM, INFRASTRUCTURE FACILITIES & AMBIENCE OF THE INSTITUTION - 2020-2021

B.Sc. BIOCHEMISTRY

(NUMBER OF RESPONDENTS - 39)



	Q1	Q2	Q3	Q4	Q5	Q6	Q7	Q8	Q9	Q10	Q11
Strongly Agree (5)	33	38	29	33	32	30	33	38	33	37	35
Agree (4)	4	0	9	1	4	5	4	0	0	1	2
Neutral (3)	2	1	1	5	3	3	2	1	6	0	2
Disagree (2)	0	0	0	0	0	0	0	0	0	1	0
Strongly Disagree (1)	0	0	0	0	0	1	0	0	0	0	0



B. Kalpane
PRINCIPAL

PRINCE SHRI VENKATESHWARA
ARTS AND SCIENCE COLLEGE
GOWRIVAKKAM, CHENNAI-600 073.



PRINCE SHRI VENKATESWARA ARTS AND SCIENCE COLLEGE

Gowrivakkam, Chennai-600073.

Affiliated to University of Madras, ISO 9001:2015 Certified Institution

7	Rate the laboratory facilities and the laboratory course experiments relevancy to real time applications (Related to infrastructure and ambience of the institution)	36	18	3	0	0
8	Rate the adequacy of library and research Centre facilities (Related to infrastructure of the institution)	40	14	2	1	0
9	Rate the sports and cultural facilities and the related activities by the institution (Related to infrastructure and ambience of the institution)	38	17	2	0	0
10	Rate the opportunities provided by the institute to participate in co-curricular and extracurricular activities (Related to ambience of the institution)	39	16	2	0	0
11	Rate the conducive and peaceful overall environment provided by the institution (Related to ambience of the institution)	41	13	3	0	0



B. Kalpana
PRINCIPAL
PRINCE SHRI VENKATESHWARA
ARTS AND SCIENCE COLLEGE
GOWRIVAKKAM, CHENNAI-600 073.



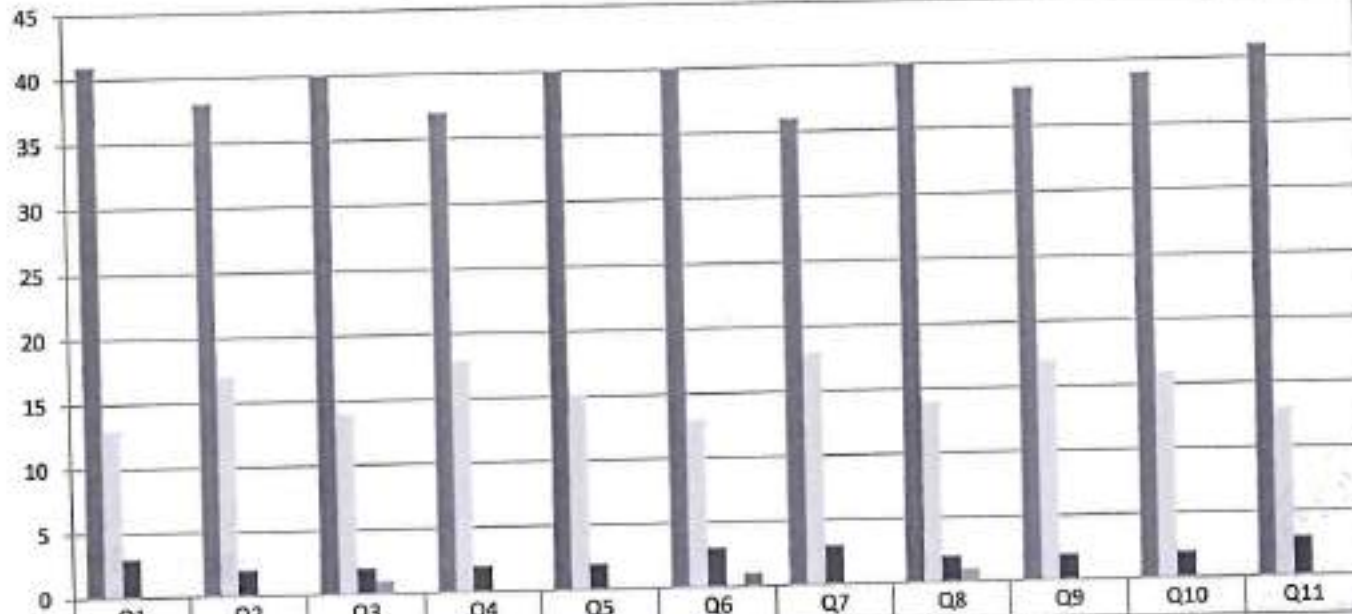
PRINCE SHRI VENKATESWARA ARTS AND SCIENCE COLLEGE

Gowrivakkam, Chennai-600073

Affiliated to University of Madras, ISO 9001:2015 Certified Institution

**ALUMNI FEEDBACK ON CURRICULUM, INFRASTRUCTURE
FACILITIES & AMBIENCE OF THE INSTITUTION - 2020-2021**

B.Sc. MICROBIOLOGY
(NUMBER OF RESPONDENTS - 57)



Strongly Agree (5)	41	38	40	37	40	40	36	40	38	39	41
Agree (4)	13	17	14	18	15	13	18	14	17	16	13
Neutral (3)	3	2	2	2	2	3	3	2	2	2	3
Disagree (2)	0	0	1	0	0	0	0	1	0	0	0
Strongly Disagree (1)	0	0	0	0	0	1	0	0	0	0	0



B. Kalpana
PRINCIPAL

PRINCE SHRI VENKATESHWARA
ARTS AND SCIENCE COLLEGE
GOWRIVAKKAM, CHENNAI-600 073



PRINCE SHRI VENKATESWARA ARTS AND SCIENCE COLLEGE

Gowrivakkam, Chennai-600073.

Affiliated to University of Madras, ISO 9001:2015 Certified Institution

ALUMNI FEEDBACK ON CURRICULUM, INFRASTRUCTURE FACILITIES & AMBIENCE OF THE INSTITUTION – ANALYSIS REPORT

Academic Year

2020-21

Department

B.Sc. Electronics and Communication Science

Number of Respondents

12

Feedback Rate: Strongly Agree (5), Agree (4), Neutral (3), Disagree (2), Strongly Disagree (1)

S. No	Feedback on Curriculum, infrastructure facilities & ambience of the institution	5	4	3	2	1
1	Rate the appropriateness of curriculum and syllabus content for placement/ higher education. (Related to curriculum)	9	2	1	0	0
2	Rate the effectiveness of the academic curriculum for the development of analytical and problem-solving skills (Related to curriculum)	7	3	2	0	0
3	Rate the curriculum and institution activities for making the students industry ready at the end of the programme (Related to curriculum)	9	0	2	1	0
4	Rate the curriculum for the improvement of creative thinking skills and knowledge / scope of the syllabus in enhancing entrepreneurship skills/ lifelong learning/ human values and ethics. (Related to Academic Performance)	7	4	1	0	0
5	Rate the faculty and the teaching learning process in the department and institution (Related to curriculum and academic performance)	9	2	1	0	0



PRINCE SHRI VENKATESWARA ARTS AND SCIENCE COLLEGE

Gowrivakkam, Chennai-600073.

Affiliated to University of Madras. ISO 9001:2015 Certified Institution

6	Rate the placement opportunities and career guidance programs provided by the Placement Cell (Related to academic performance)	9	1	1	0	1
7	Rate the laboratory facilities and the laboratory course experiments relevancy to real time applications (Related to infrastructure and ambience of the institution)	8	3	1	0	0
8	Rate the adequacy of library and research Centre facilities (Related to infrastructure of the institution)	9	2	0	1	0
9	Rate the sports and cultural facilities and the related activities by the institution (Related to infrastructure and ambience of the institution)	9	3	0	0	0
10	Rate the opportunities provided by the institute to participate in co-curricular and extracurricular activities (Related to ambience of the institution)	8	3	1	0	0
11	Rate the conducive and peaceful overall environment provided by the institution (Related to ambience of the institution)	9	2	1	0	0



B. Kalpana
PRINCIPAL
PRINCE SHRI VENKATESHWARA
ARTS AND SCIENCE COLLEGE
GOWRIVAKKAM, CHENNAI-600 073.



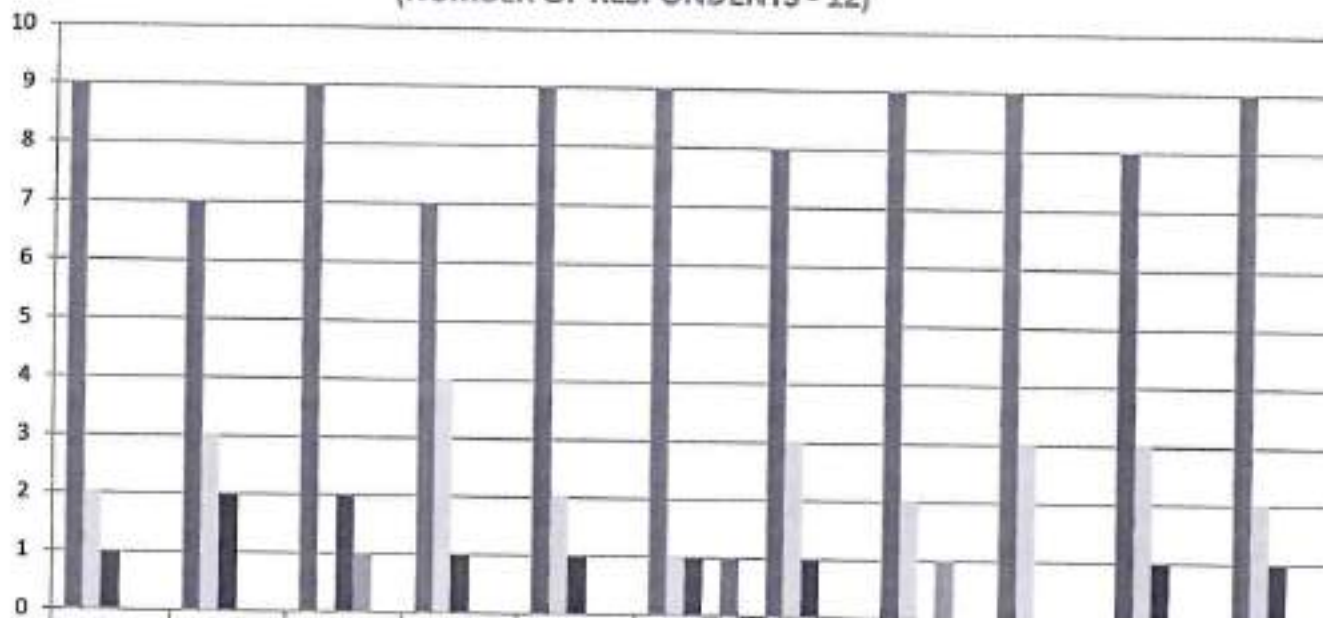
PRINCE SHRI VENKATESWARA ARTS AND SCIENCE COLLEGE

Gowrivakiam, Chennai-600073.

Affiliated to University of Madras, ISO 9001:2015 Certified Institution.

ALUMNI FEEDBACK ON CURRICULUM, INFRASTRUCTURE FACILITIES & AMBIENCE OF THE INSTITUTION - 2020-2021 B.Sc. ELECTRONICS AND COMMUNICATION SCIENCE

(NUMBER OF RESPONDENTS - 12)



	Q1	Q2	Q3	Q4	Q5	Q6	Q7	Q8	Q9	Q10	Q11
Strongly Agree (5)	9	7	9	7	9	9	8	9	9	8	9
Agree (4)	2	3	0	4	2	1	3	2	3	3	2
Neutral (3)	1	2	2	1	1	1	1	0	0	1	1
Disagree (2)	0	0	1	0	0	0	0	1	0	0	0
Strongly Disagree (1)	0	0	0	0	0	1	0	0	0	0	0



B. Kalpana
PRINCIPAL
 PRINCE SHRI VENKATESHWARA
 ARTS AND SCIENCE COLLEGE
 GOWRIVAKIAM, CHENNAI-600073.



PRINCE SHRI VENKATESWARA ARTS AND SCIENCE COLLEGE

Gowrivakkam, Chennai-600073.

Affiliated to University of Madras. ISO 9001:2015 Certified Institution

ALUMNI FEEDBACK ON CURRICULUM, INFRASTRUCTURE FACILITIES & AMBIENCE OF THE INSTITUTION – ANALYSIS REPORT

Academic Year

2020-21

Department

B.Sc.-Computer Science

Number of Respondents

82

Feedback Rate: Strongly Agree (5), Agree (4), Neutral (3), Disagree (2), Strongly Disagree (1)

S. No	Feedback on Curriculum, infrastructure facilities & ambience of the institution	5	4	3	2	1
1	Rate the appropriateness of curriculum and syllabus content for placement/ higher education. (Related to curriculum)	67	11	4	0	0
2	Rate the effectiveness of the academic curriculum for the development of analytical and problem-solving skills (Related to curriculum)	57	22	3	0	0
3	Rate the curriculum and institution activities for making the students industry ready at the end of the programme (Related to curriculum)	61	14	7	0	0
4	Rate the curriculum for the improvement of creative thinking skills and knowledge / scope of the syllabus in enhancing entrepreneurship skills/ lifelong learning/ human values and ethics. (Related to Academic Performance)	61	17	4	0	0
5	Rate the faculty and the teaching learning process in the department and institution (Related to curriculum and academic performance)	60	17	5	0	0



PRINCE SHRI VENKATESWARA ARTS AND SCIENCE COLLEGE

Gowrivakkam, Chennai-600073.

Affiliated to University of Madras, ISO 9001:2015 Certified Institution

6	Rate the placement opportunities and career guidance programs provided by the Placement Cell (Related to academic performance)	58	18	5	0	1
7	Rate the laboratory facilities and the laboratory course experiments relevancy to real time applications (Related to infrastructure and ambience of the institution)	61	17	4	0	0
8	Rate the adequacy of library and research Centre facilities (Related to infrastructure of the institution)	66	13	3	0	0
9	Rate the sports and cultural facilities and the related activities by the institution (Related to infrastructure and ambience of the institution)	60	14	8	0	0
10	Rate the opportunities provided by the institute to participate in co-curricular and extracurricular activities (Related to ambience of the institution)	67	11	3	1	0
11	Rate the conducive and peaceful overall environment provided by the institution (Related to ambience of the institution)	61	17	4	0	0



B. Kalpana
PRINCIPAL
PRINCE SHRI VENKATESHWARA
ARTS AND SCIENCE COLLEGE
GOWRIVAKKAM, CHENNAI-600 073.

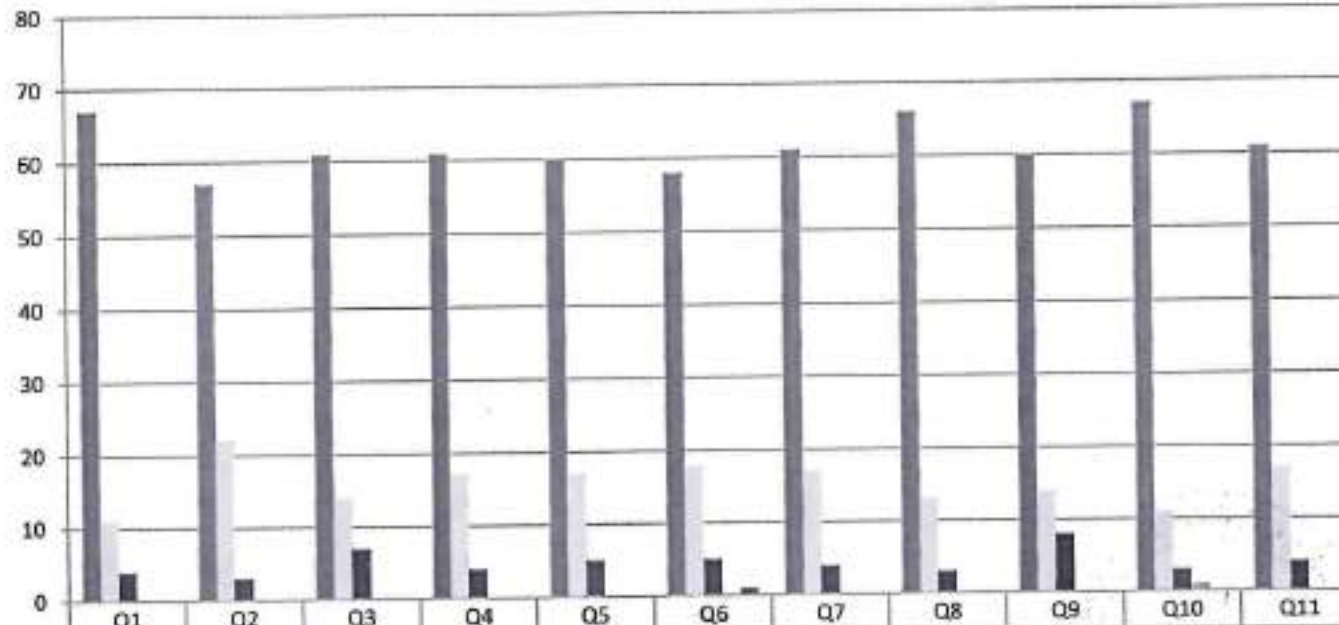


PRINCE SHRI VENKATESWARA ARTS AND SCIENCE COLLEGE

Gowrivakkam, Chennai-600073.

Affiliated to University of Madras, ISO 9001:2015 Certified Institution

**ALUMNI FEEDBACK ON CURRICULUM, INFRASTRUCTURE
FACILITIES & AMBIENCE OF THE INSTITUTION - 2020-2021**
B.Sc. COMPUTER SCIENCE
(NUMBER OF RESPONDENTS - 82)



B. Kalpana
PRINCIPAL
PRINCE SHRI VENKATESHWARA
ARTS AND SCIENCE COLLEGE
GOWRIVAKKAM, CHENNAI-600 073



PRINCE SHRI VENKATESWARA ARTS AND SCIENCE COLLEGE

Gowrivakkam, Chennai-600073.

Affiliated to University of Madras, ISO 9001:2015 Certified Institution

**ALUMNI FEEDBACK ON CURRICULUM, INFRASTRUCTURE FACILITIES & AMBIENCE OF THE
INSTITUTION – ANALYSIS REPORT**

Academic Year 2020-21
Department B. Com-General
Number of Respondents 120

Feedback Rate: Strongly Agree (5), Agree (4), Neutral (3), Disagree (2), Strongly Disagree (1)

S. No	Feedback on Curriculum, infrastructure facilities & ambience of the institution	5	4	3	2	1
1	Rate the appropriateness of curriculum and syllabus content for placement/ higher education. (Related to curriculum)	82	34	4	0	0
2	Rate the effectiveness of the academic curriculum for the development of analytical and problem-solving skills (Related to curriculum)	72	45	3	0	0
3	Rate the curriculum and institution activities for making the students industry ready at the end of the programme (Related to curriculum)	76	37	7	0	0
4	Rate the curriculum for the improvement of creative thinking skills and knowledge / scope of the syllabus in enhancing entrepreneurship skills/ lifelong learning/ human values and ethics. (Related to Academic Performance)	76	40	4	0	0
5	Rate the faculty and the teaching learning process in the department and institution (Related to curriculum and academic performance)	75	40	5	0	0



PRINCE SHRI VENKATESWARA ARTS AND SCIENCE COLLEGE

Gowrivaikam, Chennai-600073

Affiliated to University of Madras, ISO 9001:2015 Certified Institution

6	Rate the placement opportunities and career guidance programs provided by the Placement Cell (Related to academic performance)	73	41	5	0	1
7	Rate the laboratory facilities and the laboratory course experiments relevancy to real time applications (Related to infrastructure and ambience of the institution)	76	40	4	0	0
8	Rate the adequacy of library and research Centre facilities (Related to infrastructure of the institution)	81	36	3	0	0
9	Rate the sports and cultural facilities and the related activities by the institution (Related to infrastructure and ambience of the institution)	75	37	8	0	0
10	Rate the opportunities provided by the institute to participate in co-curricular and extracurricular activities (Related to ambience of the institution)	82	34	3	1	0
11	Rate the conducive and peaceful overall environment provided by the institution (Related to ambience of the institution)	76	40	4	0	0



B. Kalpana
PRINCIPAL
PRINCE SHRI VENKATESHWARA
ARTS AND SCIENCE COLLEGE
GOWRIVAKKAM, CHENNAI-600 073.



PRINCE SHRI VENKATESWARA ARTS AND SCIENCE COLLEGE

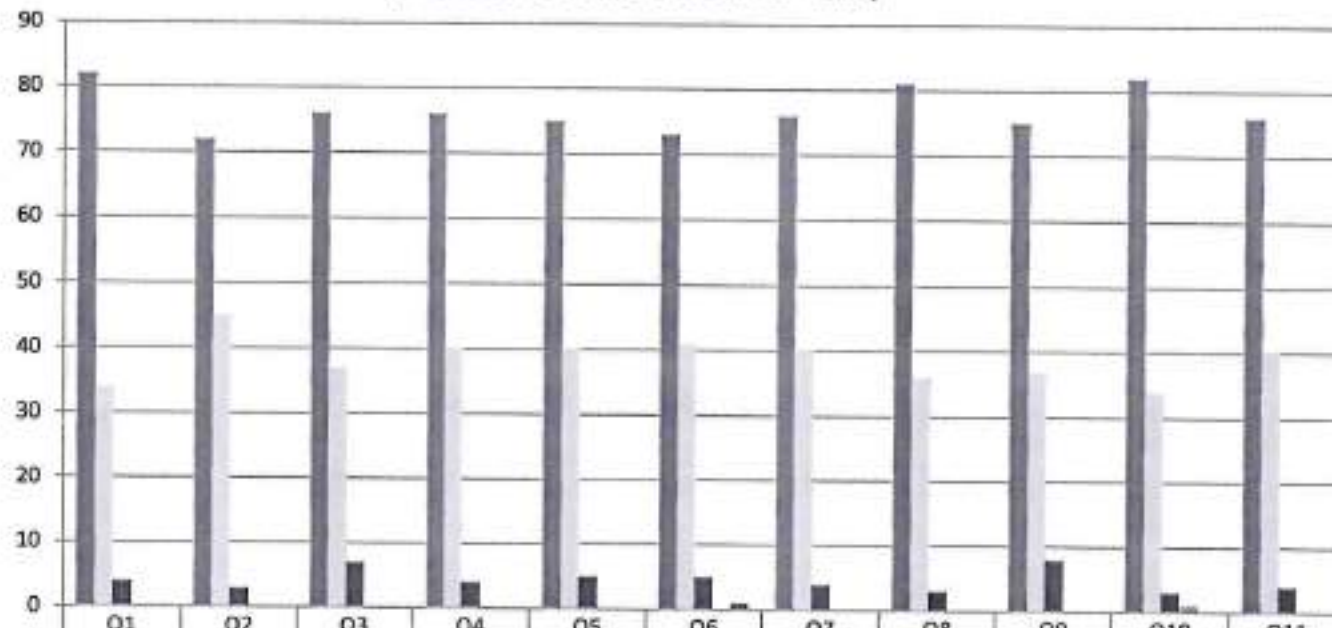
Gowrivakkam, Chennai-600073.

Affiliated to University of Madras, ISO 9001:2015 Certified Institution

ALUMNI FEEDBACK ON CURRICULUM, INFRASTRUCTURE FACILITIES & AMBIENCE OF THE INSTITUTION - 2020-2021

B.COM (GENERAL)

(NUMBER OF RESPONDENTS - 120)



	Q1	Q2	Q3	Q4	Q5	Q6	Q7	Q8	Q9	Q10	Q11
Strongly Agree (5)	82	72	76	76	75	73	76	81	75	82	76
Agree (4)	34	45	37	40	40	41	40	36	37	34	40
Neutral (3)	4	3	7	4	5	5	4	3	8	3	4
Disagree (2)	0	0	0	0	0	0	0	0	0	0	0
Strongly Disagree (1)	0	0	0	0	0	1	0	0	0	0	0



B. Kalpana
PRINCIPAL
PRINCE SHRI VENKATESHWARA
ARTS AND SCIENCE COLLEGE
GOWRIVAKKAM, CHENNAI-600 073.



PRINCE SHRI VENKATESWARA ARTS AND SCIENCE COLLEGE

Gowrivakkam, Chennai-600073

Affiliated to University of Madras, ISO 9001:2015 Certified Institution

ALUMNI FEEDBACK ON CURRICULUM, INFRASTRUCTURE FACILITIES & AMBIENCE OF THE INSTITUTION – ANALYSIS REPORT

Academic Year 2020-21

Department BCA

Number of Respondents 168

Feedback Rate: Strongly Agree (5), Agree (4), Neutral (3), Disagree (2), Strongly Disagree (1)

S. No	Feedback on Curriculum, infrastructure facilities & ambience of the institution	5	4	3	2	1
1	Rate the appropriateness of curriculum and syllabus content for placement/ higher education. (Related to curriculum)	118	43	7	0	0
2	Rate the effectiveness of the academic curriculum for the development of analytical and problem-solving skills (Related to curriculum)	108	54	6	0	0
3	Rate the curriculum and institution activities for making the students industry ready at the end of the programme (Related to curriculum)	112	46	10	0	0
4	Rate the curriculum for the improvement of creative thinking skills and knowledge / scope of the syllabus in enhancing entrepreneurship skills/ lifelong learning/ human values and ethics. (Related to Academic Performance)	112	49	7	0	0



PRINCE SHRI VENKATESWARA ARTS AND SCIENCE COLLEGE

Gowrivakkam, Chennai-600073

Affiliated to University of Madras, ISO 9001:2015 Certified Institution

5	Rate the faculty and the teaching learning process in the department and institution (Related to curriculum and academic performance)	111	49	8	0	0
6	Rate the placement opportunities and career guidance programs provided by the Placement Cell (Related to academic performance)	109	50	8	0	1
7	Rate the laboratory facilities and the laboratory course experiments relevancy to real time applications (Related to infrastructure and ambience of the institution)	112	49	7	0	0
8	Rate the adequacy of library and research Centre facilities (Related to infrastructure of the institution)	117	45	6	0	0
9	Rate the sports and cultural facilities and the related activities by the institution (Related to infrastructure and ambience of the institution)	111	46	11	0	0
10	Rate the opportunities provided by the institute to participate in co-curricular and extracurricular activities (Related to ambience of the institution)	118	43	6	1	0
11	Rate the conducive and peaceful overall environment provided by the institution (Related to ambience of the institution)	112	49	7	0	0



B. Kalpana
PRINCIPAL
PRINCE SHRI VENKATESHWARA
ARTS AND SCIENCE COLLEGE
GOWRIVAKKAM, CHENNAI-600 073.



PRINCE SHRI VENKATESWARA ARTS AND SCIENCE COLLEGE

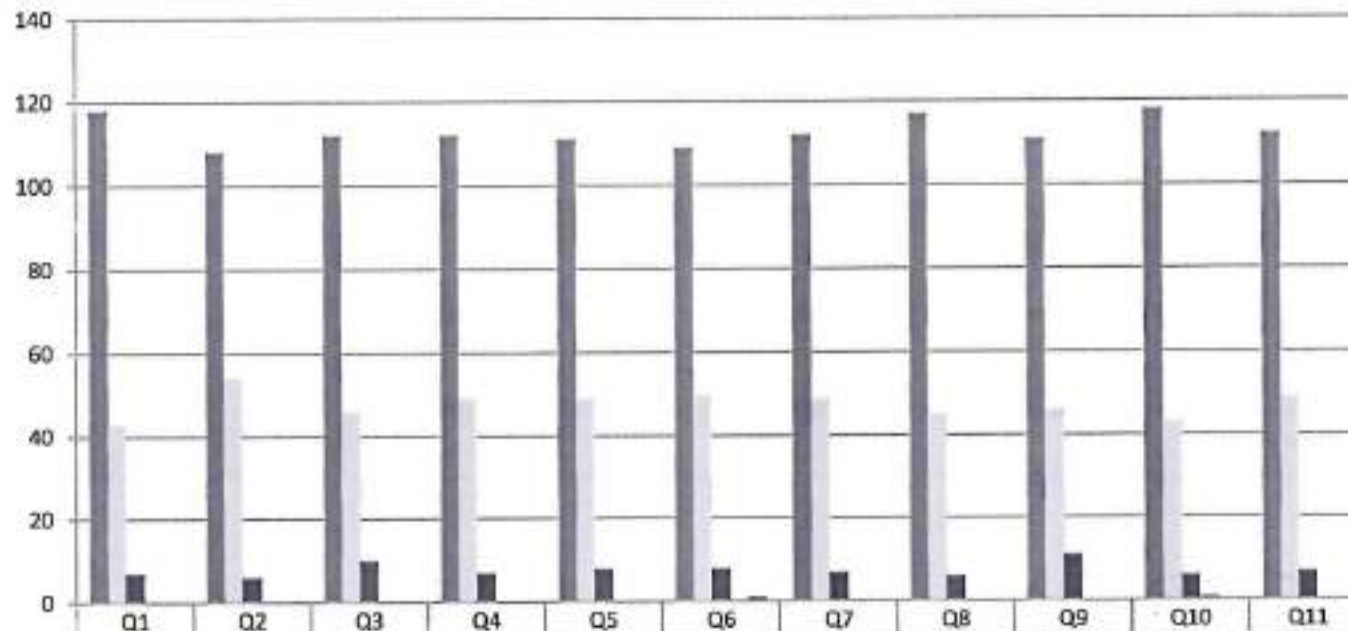
Gowrivaldam, Chennai-600073.

Affiliated to University of Madras, ISO 9001:2015 Certified Institution

ALUMNI FEEDBACK ON CURRICULUM, INFRASTRUCTURE FACILITIES & AMBIENCE OF THE INSTITUTION - 2020-2021

BCA

(NUMBER OF RESPONDENTS - 168)



	Q1	Q2	Q3	Q4	Q5	Q6	Q7	Q8	Q9	Q10	Q11
Strongly Agree (5)	118	108	112	112	111	109	112	117	111	118	112
Agree (4)	43	54	46	49	49	50	49	45	46	43	49
Neutral (3)	7	6	10	7	8	8	7	6	11	6	7
Disagree (2)	0	0	0	0	0	0	0	0	0	1	0
Strongly Disagree (1)	0	0	0	0	0	1	0	0	0	0	0



B. Kalpana
PRINCIPAL
 PRINCE SHRI VENKATESHWARA
 ARTS AND SCIENCE COLLEGE
 GOWRIVALDAM, CHENNAI-600 073



PRINCE SHRI VENKATESWARA ARTS AND SCIENCE COLLEGE

Gowrivakkam, Chennai-600073.

Affiliated to University of Madras, ISO 9001:2015 Certified Institution

**ALUMNI FEEDBACK ON CURRICULUM, INFRASTRUCTURE FACILITIES & AMBIENCE OF THE INSTITUTION
- ANALYSIS REPORT**

Academic Year 2020-21
Department B.Sc.-Biotechnology
Number of Respondents 63

Feedback Rate: Strongly Agree (5), Agree (4), Neutral (3), Disagree (2), Strongly Disagree (1)

S. No	Feedback on Curriculum, infrastructure facilities & ambience of the institution	5	4	3	2	1
1	Rate the appropriateness of curriculum and syllabus content for placement/ higher education. (Related to curriculum)	36	20	7	0	0
2	Rate the effectiveness of the academic curriculum for the development of analytical and problem-solving skills (Related to curriculum)	36	20	6	0	1
3	Rate the curriculum and institution activities for making the students industry ready at the end of the programme (Related to curriculum)	37	19	6	1	0
4	Rate the curriculum for the improvement of creative thinking skills and knowledge / scope of the syllabus in enhancing entrepreneurship skills/ lifelong learning/ human values and ethics. (Related to Academic Performance)	37	18	8	0	0
5	Rate the faculty and the teaching learning process in the department and institution (Related to curriculum and academic performance)	40	16	7	0	0



PRINCE SHRI VENKATESWARA ARTS AND SCIENCE COLLEGE

Gowrivakkam, Chennai-600073

Affiliated to University of Madras, ISO 9001:2015 Certified Institution

6	Rate the placement opportunities and career guidance programs provided by the Placement Cell (Related to academic performance)	36	21	6	0	0
7	Rate the laboratory facilities and the laboratory course experiments relevancy to real time applications (Related to infrastructure and ambience of the institution)	36	21	6	0	0
8	Rate the adequacy of library and research Centre facilities (Related to infrastructure of the institution)	36	20	7	0	0
9	Rate the sports and cultural facilities and the related activities by the institution (Related to infrastructure and ambience of the institution)	34	20	9	0	0
10	Rate the opportunities provided by the institute to participate in co-curricular and extracurricular activities (Related to ambience of the institution)	39	16	6	1	1
11	Rate the conducive and peaceful overall environment provided by the institution (Related to ambience of the institution)	36	21	6	0	0



B. Kalpana
PRINCIPAL
PRINCE SHRI VENKATESHWARA
ARTS AND SCIENCE COLLEGE
GOWRIVAKKAM, CHENNAI-600 073.

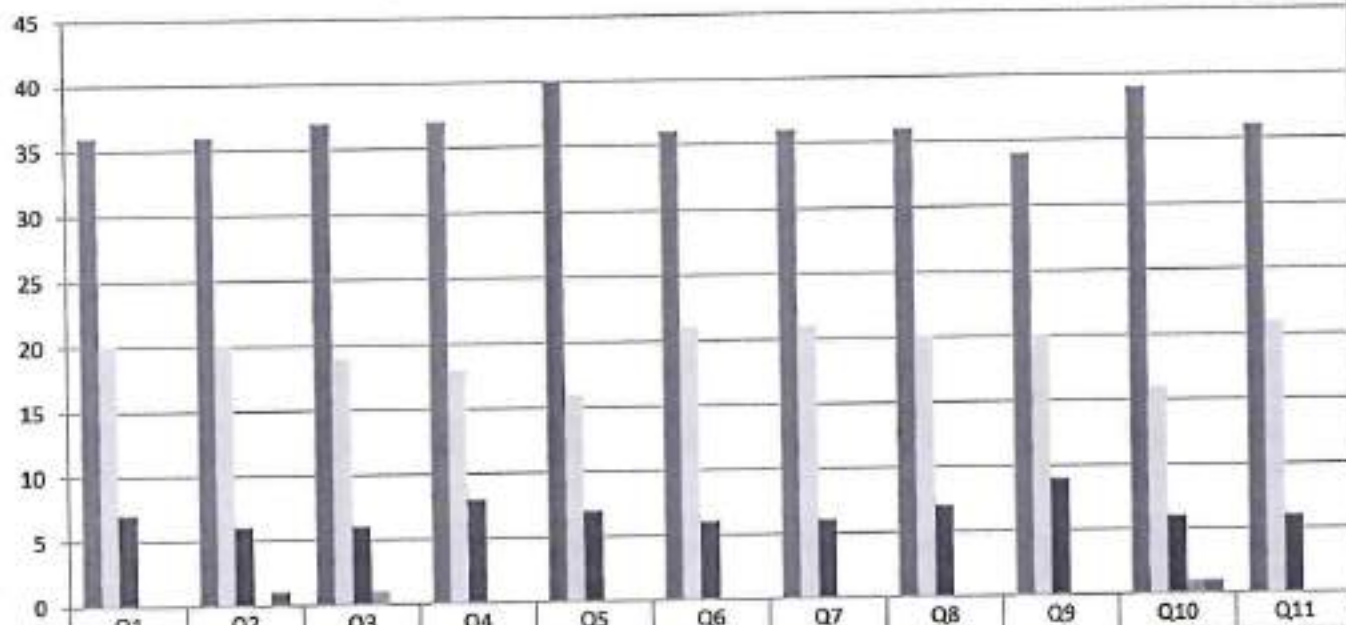


PRINCE SHRI VENKATESWARA ARTS AND SCIENCE COLLEGE

Gowrivakkam, Chennai-600073.

Affiliated to University of Madras, ISO 9001:2015 Certified Institution

**ALUMNI FEEDBACK ON CURRICULUM, INFRASTRUCTURE
FACILITIES & AMBIENCE OF THE INSTITUTION - 2020-2021**
B.Sc. BIOTECHNOLOGY
(NUMBER OF RESPONDENTS - 63)



P. Kalpana
PRINCIPAL

PRINCE SHRI VENKATESHWARA
ARTS AND SCIENCE COLLEGE
GOWRIVAKKAM, CHENNAI-600 073



PRINCE SHRI VENKATESWARA ARTS AND SCIENCE COLLEGE

Gowrivalkcam, Chennai-600073.

Affiliated to University of Madras, ISO 9001:2015 Certified Institution

ALUMNI FEEDBACK ON CURRICULUM, INFRASTRUCTURE FACILITIES & AMBIENCE OF THE INSTITUTION – ANALYSIS REPORT

Academic Year 2020-21
Department B. Com - Accounting and Finance
Number of Respondents 83

Feedback Rate: Strongly Agree (5), Agree (4), Neutral (3), Disagree (2), Strongly Disagree (1)

S. No	Feedback on Curriculum, infrastructure facilities & ambience of the institution	5	4	3	2	1
1	Rate the appropriateness of curriculum and syllabus content for placement/ higher education. (Related to curriculum)	56	17	10	0	0
2	Rate the effectiveness of the academic curriculum for the development of analytical and problem-solving skills (Related to curriculum)	56	17	9	0	1
3	Rate the curriculum and institution activities for making the students industry ready at the end of the programme (Related to curriculum)	57	16	9	1	0
4	Rate the curriculum for the improvement of creative thinking skills and knowledge / scope of the syllabus in enhancing entrepreneurship skills/ lifelong learning/ human values and ethics. (Related to Academic Performance)	57	15	11	0	0
5	Rate the faculty and the teaching learning process in the department and institution (Related to curriculum and academic performance)	60	13	10	0	0



PRINCE SHRI VENKATESWARA ARTS AND SCIENCE COLLEGE

Gowrivakkam, Chennai-600073.

Affiliated to University of Madras, ISO 9001:2015 Certified Institution

6	Rate the placement opportunities and career guidance programs provided by the Placement Cell (Related to academic performance)	56	18	9	0	0
7	Rate the laboratory facilities and the laboratory course experiments relevancy to real time applications (Related to infrastructure and ambience of the institution)	56	18	9	0	0
8	Rate the adequacy of library and research Centre facilities (Related to infrastructure of the institution)	56	17	10	0	0
9	Rate the sports and cultural facilities and the related activities by the institution (Related to infrastructure and ambience of the institution)	54	17	12	0	0
10	Rate the opportunities provided by the institute to participate in co-curricular and extracurricular activities (Related to ambience of the institution)	59	13	9	1	1
11	Rate the conducive and peaceful overall environment provided by the institution (Related to ambience of the institution)	56	18	9	0	0



B. Kalpana
PRINCIPAL
PRINCE SHRI VENKATESHWARA
ARTS AND SCIENCE COLLEGE
GOWRIVAKKAM, CHENNAI-600 073.



PRINCE SHRI VENKATESWARA ARTS AND SCIENCE COLLEGE

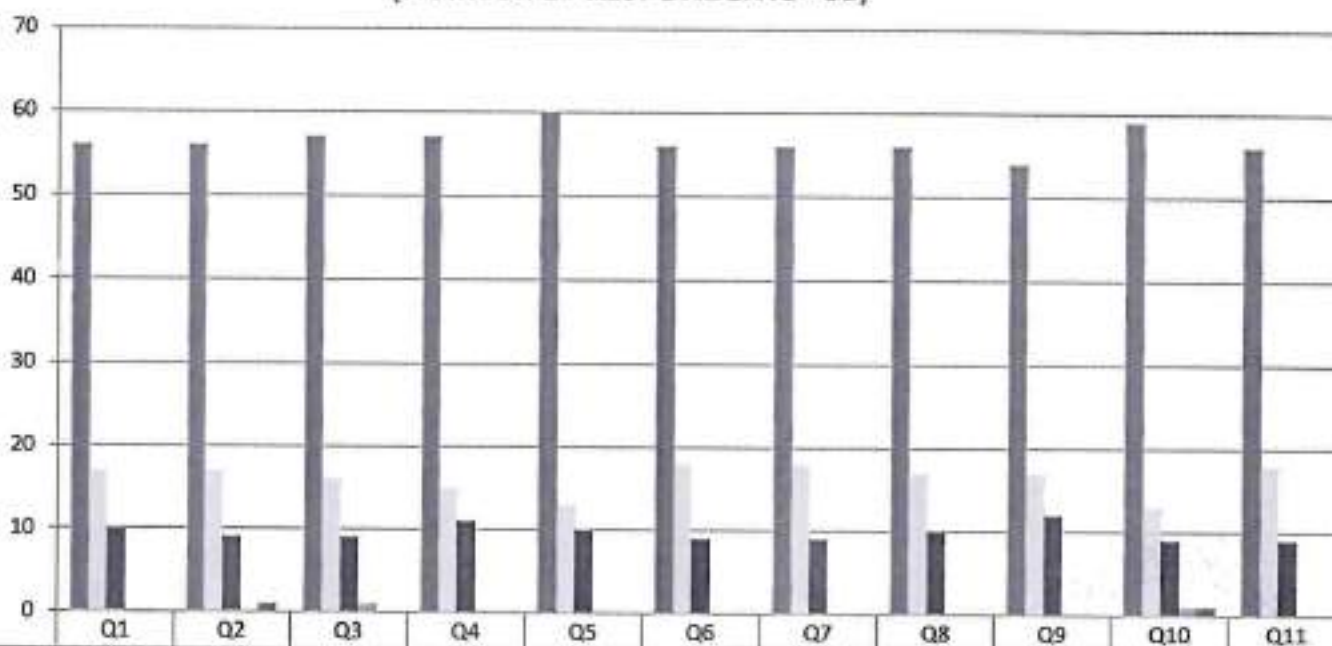
Gowrivakkam, Chennai-600073

Affiliated to University of Madras, ISO 9001:2015 Certified Institution

**ALUMNI FEEDBACK ON CURRICULUM, INFRASTRUCTURE
FACILITIES & AMBIENCE OF THE INSTITUTION - 2020-2021**

B.COM (ACCOUNTING AND FINANCE)

(NUMBER OF RESPONDENTS - 83)



	Q1	Q2	Q3	Q4	Q5	Q6	Q7	Q8	Q9	Q10	Q11
Strongly Agree (5)	56	56	57	57	60	56	56	56	54	59	56
Agree (4)	17	17	16	15	13	18	18	17	17	13	18
Neutral (3)	10	9	9	11	10	9	9	10	12	9	9
Disagree (2)	0	0	1	0	0	0	0	0	0	1	0
Strongly Disagree (1)	0	1	0	0	0	0	0	0	0	1	0



B. Kalpana
PRINCIPAL

**PRINCE SHRI VENKATESHWARA
ARTS AND SCIENCE COLLEGE
GOWRIVAKKAM, CHENNAI-600 073**



PRINCE SHRI VENKATESWARA ARTS AND SCIENCE COLLEGE

Gowrivaldkam, Chennai-600073

Affiliated to University of Madras, ISO 9001:2015 Certified Institution

ALUMNI FEEDBACK ON CURRICULUM, INFRASTRUCTURE FACILITIES & AMBIENCE OF THE INSTITUTION – ANALYSIS REPORT

Academic Year 2020-21
Department B.A. English
Number of Respondents 43

Feedback Rate: Strongly Agree (5), Agree (4), Neutral (3), Disagree (2), Strongly Disagree (1)

S. No	Feedback on Curriculum, infrastructure facilities & ambience of the institution	5	4	3	2	1
1	Rate the appropriateness of curriculum and syllabus content for placement/ higher education. (Related to curriculum)	29	11	2	0	1
2	Rate the effectiveness of the academic curriculum for the development of analytical and problem-solving skills (Related to curriculum)	27	14	2	0	0
3	Rate the curriculum and institution activities for making the students industry ready at the end of the programme (Related to curriculum)	30	10	3	0	0
4	Rate the curriculum for the improvement of creative thinking skills and knowledge / scope of the syllabus in enhancing entrepreneurship skills/ lifelong learning/ human values and ethics. (Related to Academic Performance)	33	7	3	0	0
5	Rate the faculty and the teaching learning process in the department and institution (Related to curriculum and academic performance)	28	12	2	1	0



PRINCE SHRI VENKATESWARA ARTS AND SCIENCE COLLEGE

Gowrivakkam, Chennai-600073.

Affiliated to University of Madras, ISO 9001:2015 Certified Institution.

6	Rate the placement opportunities and career guidance programs provided by the Placement Cell (Related to academic performance)	30	10	2	1	0
7	Rate the laboratory facilities and the laboratory course experiments relevancy to real time applications (Related to infrastructure and ambience of the institution)	28	13	2	0	0
8	Rate the adequacy of library and research Centre facilities (Related to infrastructure of the institution)	29	11	3	0	0
9	Rate the sports and cultural facilities and the related activities by the institution (Related to infrastructure and ambience of the institution)	30	11	1	1	0
10	Rate the opportunities provided by the institute to participate in co-curricular and extracurricular activities (Related to ambience of the institution)	33	8	1	0	1
11	Rate the conducive and peaceful overall environment provided by the institution (Related to ambience of the institution)	28	13	2	0	0



B. Kalpana
PRINCIPAL
PRINCE SHRI VENKATESHWARA
ARTS AND SCIENCE COLLEGE
GOWRIVAKKAM, CHENNAI-600 073.



PRINCE SHRI VENKATESWARA ARTS AND SCIENCE COLLEGE

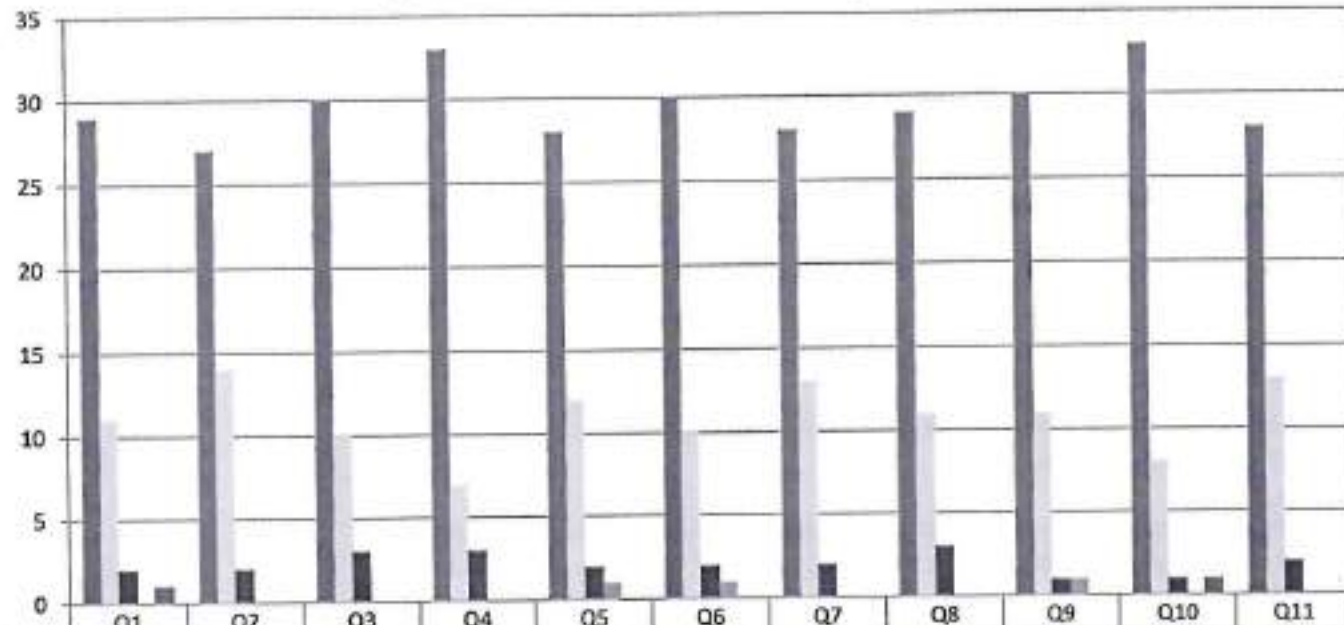
Gowrivakkam, Chennai-600073

Affiliated to University of Madras, ISO 9001:2015 Certified Institution

ALUMNI FEEDBACK ON CURRICULUM, INFRASTRUCTURE FACILITIES & AMBIENCE OF THE INSTITUTION - 2020-2021

B.A. ENGLISH

(NUMBER OF RESPONDENTS - 43)



Strongly Agree (5)	29	27	30	33	28	30	28	29	30	33	28
Agree (4)	11	14	10	7	12	10	13	11	11	8	13
Neutral (3)	2	2	3	3	2	2	2	3	1	1	2
Disagree (2)	0	0	0	0	1	1	0	0	1	0	0
Strongly Disagree (1)	1	0	0	0	0	0	0	0	0	0	0



B. Kalpana
PRINCIPAL
 PRINCE SHRI VENKATESHWARA
 ARTS AND SCIENCE COLLEGE
 GOWRIVAKKAM, CHENNAI-600 073



PRINCE SHRI VENKATESWARA ARTS AND SCIENCE COLLEGE

Gowrivakktam, Chennai-600073

Affiliated to University of Madras. ISO 9001:2015 Certified Institution

ALUMNI FEEDBACK ON CURRICULUM, INFRASTRUCTURE FACILITIES & AMBIENCE OF THE INSTITUTION – ANALYSIS REPORT

Academic Year 2020-21
Department M.Sc. Microbiology
Number of Respondents 12

Feedback Rate: Strongly Agree (5), Agree (4), Neutral (3), Disagree (2), Strongly Disagree (1)

S. No	Feedback on Curriculum, infrastructure facilities & ambience of the institution	5	4	3	2	1
1	Rate the appropriateness of curriculum and syllabus content for placement/ higher education. (Related to curriculum)	10	1	0	1	0
2	Rate the effectiveness of the academic curriculum for the development of analytical and problem-solving skills (Related to curriculum)	9	3	0	0	0
3	Rate the curriculum and institution activities for making the students industry ready at the end of the programme (Related to curriculum)	7	3	2	0	0
4	Rate the curriculum for the improvement of creative thinking skills and knowledge / scope of the syllabus in enhancing entrepreneurship skills/ lifelong learning/ human values and ethics. (Related to Academic Performance)	11	1	0	0	0
5	Rate the faculty and the teaching learning process in the department and institution (Related to curriculum and academic performance)	11	0	1	0	0



PRINCE SHRI VENKATESWARA ARTS AND SCIENCE COLLEGE

Gowrivakkam, Chennai-600073.
Affiliated to University of Madras, ISO 9001:2015 Certified Institution

6	Rate the placement opportunities and career guidance programs provided by the Placement Cell (Related to academic performance)	6	4	2	0	0
7	Rate the laboratory facilities and the laboratory course experiments relevancy to real time applications (Related to infrastructure and ambience of the institution)	9	2	1	0	0
8	Rate the adequacy of library and research Centre facilities (Related to infrastructure of the institution)	12	0	0	0	0
9	Rate the sports and cultural facilities and the related activities by the institution (Related to infrastructure and ambience of the institution)	10	2	0	0	0
10	Rate the opportunities provided by the institute to participate in co-curricular and extracurricular activities (Related to ambience of the institution)	10	1	1	0	0
11	Rate the conducive and peaceful overall environment provided by the institution (Related to ambience of the institution)	9	3	0	0	0



B. Kalpana
PRINCIPAL
PRINCE SHRI VENKATESHWARA
ARTS AND SCIENCE COLLEGE
GOWRIVAKKAM, CHENNAI-600 073.



PRINCE SHRI VENKATESWARA ARTS AND SCIENCE COLLEGE

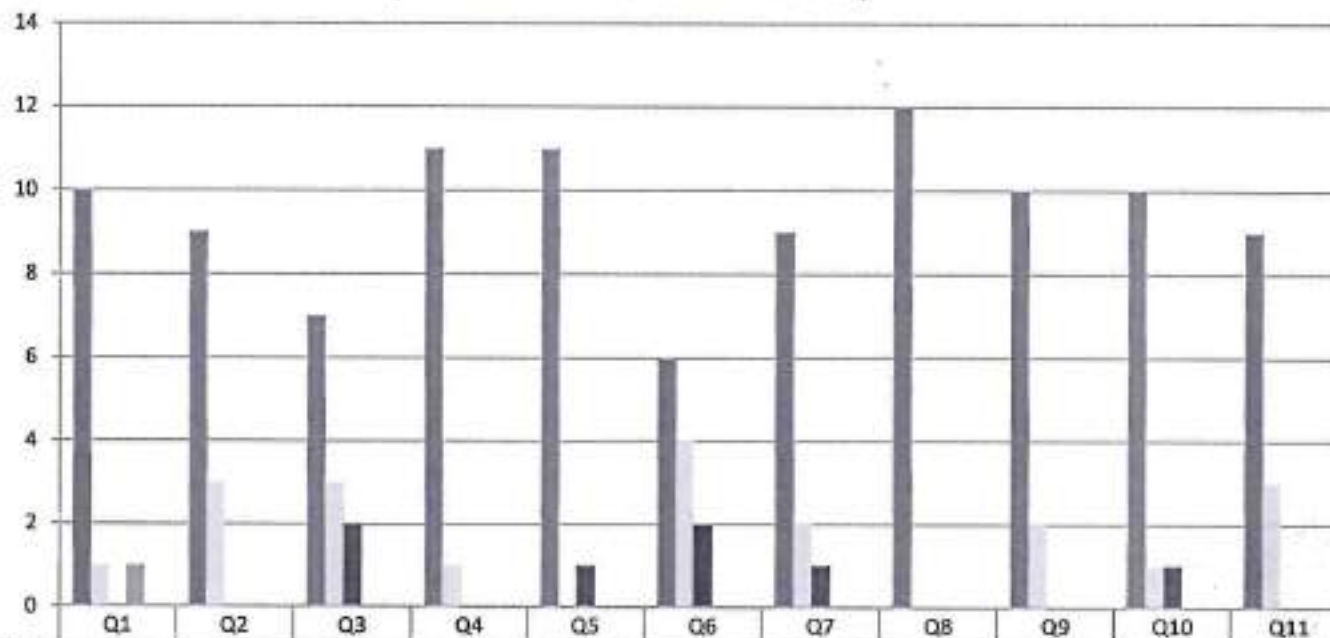
Gowrivakkam, Chennai-600073

Affiliated to University of Madras, ISO 9001:2015 Certified Institution

**ALUMNI FEEDBACK ON CURRICULUM, INFRASTRUCTURE
FACILITIES & AMBIENCE OF THE INSTITUTION - 2020-2021**

M.Sc. MICROBIOLOGY

(NUMBER OF RESPONDENTS - 12)



	Q1	Q2	Q3	Q4	Q5	Q6	Q7	Q8	Q9	Q10	Q11
Strongly Agree (5)	10	9	7	11	11	6	9	12	10	10	9
Agree (4)	1	3	3	1	0	4	2	0	2	1	3
Neutral (3)	0	0	2	0	1	2	1	0	0	1	0
Disagree (2)	1	0	0	0	0	0	0	0	0	0	0
Strongly Disagree (1)	0	0	0	0	0	0	0	0	0	0	0



B. Kalpana
PRINCIPAL

PRINCE SHRI VENKATESHWARA
ARTS AND SCIENCE COLLEGE
GOWRIVAKKAM, CHENNAI-600 073.



PRINCE SHRI VENKATESWARA ARTS AND SCIENCE COLLEGE

Gowrivaldkam, Chennai-600073.

Affiliated to University of Madras, ISO 9001:2015 Certified Institution

ALUMNI FEEDBACK ON CURRICULUM, INFRASTRUCTURE FACILITIES & AMBIENCE OF THE INSTITUTION – ANALYSIS REPORT

Academic Year 2020-21
Department M.Sc. Computer Science
Number of Respondents 10

Feedback Rate: Strongly Agree (5), Agree (4), Neutral (3), Disagree (2), Strongly Disagree (1)

S. No	Feedback on Curriculum, infrastructure facilities & ambience of the institution	5	4	3	2	1
1	Rate the appropriateness of curriculum and syllabus content for placement/ higher education. (Related to curriculum)	8	0	1	1	0
2	Rate the effectiveness of the academic curriculum for the development of analytical and problem-solving skills (Related to curriculum)	7	2	1	0	0
3	Rate the curriculum and institution activities for making the students industry ready at the end of the programme (Related to curriculum)	5	3	2	0	0
4	Rate the curriculum for the improvement of creative thinking skills and knowledge / scope of the syllabus in enhancing entrepreneurship skills/ lifelong learning/ human values and ethics. (Related to Academic Performance)	9	1	0	0	0
5	Rate the faculty and the teaching learning process in the department and institution (Related to curriculum and academic performance)	8	0	2	0	0



PRINCE SHRI VENKATESWARA ARTS AND SCIENCE COLLEGE

Gowrivakkam, Chennai-600073.

Affiliated to University of Madras, ISO 9001:2015 Certified Institution

6	Rate the placement opportunities and career guidance programs provided by the Placement Cell (Related to academic performance)	4	3	3	0	0
7	Rate the laboratory facilities and the laboratory course experiments relevancy to real time applications (Related to infrastructure and ambience of the institution)	7	1	2	0	0
8	Rate the adequacy of library and research Centre facilities (Related to infrastructure of the institution)	9	0	1	0	0
9	Rate the sports and cultural facilities and the related activities by the institution (Related to infrastructure and ambience of the institution)	8	1	1	0	0
10	Rate the opportunities provided by the institute to participate in co-curricular and extracurricular activities (Related to ambience of the institution)	8	0	2	0	0
11	Rate the conducive and peaceful overall environment provided by the institution (Related to ambience of the institution)	7	2	1	0	0



B. Kalpana
PRINCIPAL
PRINCE SHRI VENKATESHWARA
ARTS AND SCIENCE COLLEGE
GOWRIVAKKAM, CHENNAI-600 073.



PRINCE SHRI VENKATESWARA ARTS AND SCIENCE COLLEGE

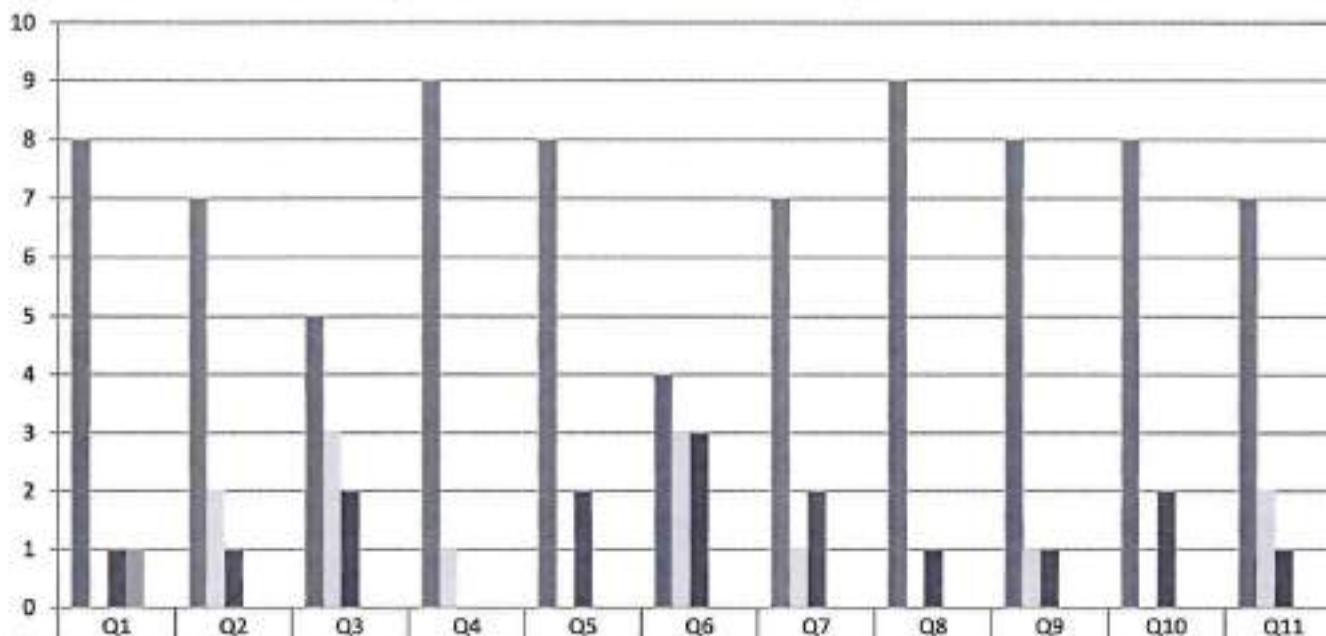
Gowrivakkam, Chennai-600073.

Affiliated to University of Madras. ISO 9001:2015 Certified Institution

ALUMNI FEEDBACK ON CURRICULUM, INFRASTRUCTURE FACILITIES & AMBIENCE OF THE INSTITUTION - 2020-2021

M.Sc. COMPUTER SCIENCE

(NUMBER OF RESPONDENTS - 10)



	Q1	Q2	Q3	Q4	Q5	Q6	Q7	Q8	Q9	Q10	Q11
Strongly Agree (5)	8	7	5	9	8	4	7	9	8	8	7
Agree (4)	0	2	3	1	0	3	1	0	1	0	2
Neutral (3)	1	1	2	0	2	3	2	1	1	2	1
Disagree (2)	1	0	0	0	0	0	0	0	0	0	0
Strongly Disagree (1)	0	0	0	0	0	0	0	0	0	0	0



B. Kalpana
PRINCIPAL
 PRINCE SHRI VENKATESHWARA
 ARTS AND SCIENCE COLLEGE
 GOWRIVAKKAM, CHENNAI-600 073.



PRINCE SHRI VENKATESWARA ARTS AND SCIENCE COLLEGE

Gowrivakkam, Chennai-600073.

Affiliated to University of Madras. ISO 9001:2015 Certified Institution.

ALUMNI FEEDBACK ON CURRICULUM, INFRASTRUCTURE FACILITIES & AMBIENCE OF THE INSTITUTION – ANALYSIS REPORT

Academic Year 2020-21
Department M.Sc. Biochemistry
Number of Respondents 9

Feedback Rate: Strongly Agree (5), Agree (4), Neutral (3), Disagree (2), Strongly Disagree (1)

S. No	Feedback on Curriculum, infrastructure facilities & ambience of the institution	5	4	3	2	1
1	Rate the appropriateness of curriculum and syllabus content for placement/ higher education. (Related to curriculum)	6	3	0	0	0
2	Rate the effectiveness of the academic curriculum for the development of analytical and problem-solving skills (Related to curriculum)	7	2	0	0	0
3	Rate the curriculum and institution activities for making the students industry ready at the end of the programme (Related to curriculum)	7	2	0	0	0
4	Rate the curriculum for the improvement of creative thinking skills and knowledge / scope of the syllabus in enhancing entrepreneurship skills/ lifelong learning/ human values and ethics. (Related to Academic Performance)	7	1	1	0	0
5	Rate the faculty and the teaching learning process in the department and institution (Related to curriculum and academic performance)	7	2	0	0	0



PRINCE SHRI VENKATESWARA ARTS AND SCIENCE COLLEGE

Gowrivakkam, Chennai-600073.

Affiliated to University of Madras, ISO 9001:2015 Certified Institution

6	Rate the placement opportunities and career guidance programs provided by the Placement Cell (Related to academic performance)	7	1	1	0	0
7	Rate the laboratory facilities and the laboratory course experiments relevancy to real time applications (Related to infrastructure and ambience of the institution)	8	1	0	0	0
8	Rate the adequacy of library and research Centre facilities (Related to infrastructure of the institution)	8	1	0	0	0
9	Rate the sports and cultural facilities and the related activities by the institution (Related to infrastructure and ambience of the institution)	6	3	0	0	0
10	Rate the opportunities provided by the institute to participate in co-curricular and extracurricular activities (Related to ambience of the institution)	7	2	0	0	0
11	Rate the conducive and peaceful overall environment provided by the institution (Related to ambience of the institution)	6	2	1	0	0



B. Kalpana
PRINCIPAL
PRINCE SHRI VENKATESHWARA
ARTS AND SCIENCE COLLEGE
GOWRIVAKKAM, CHENNAI-600 073.



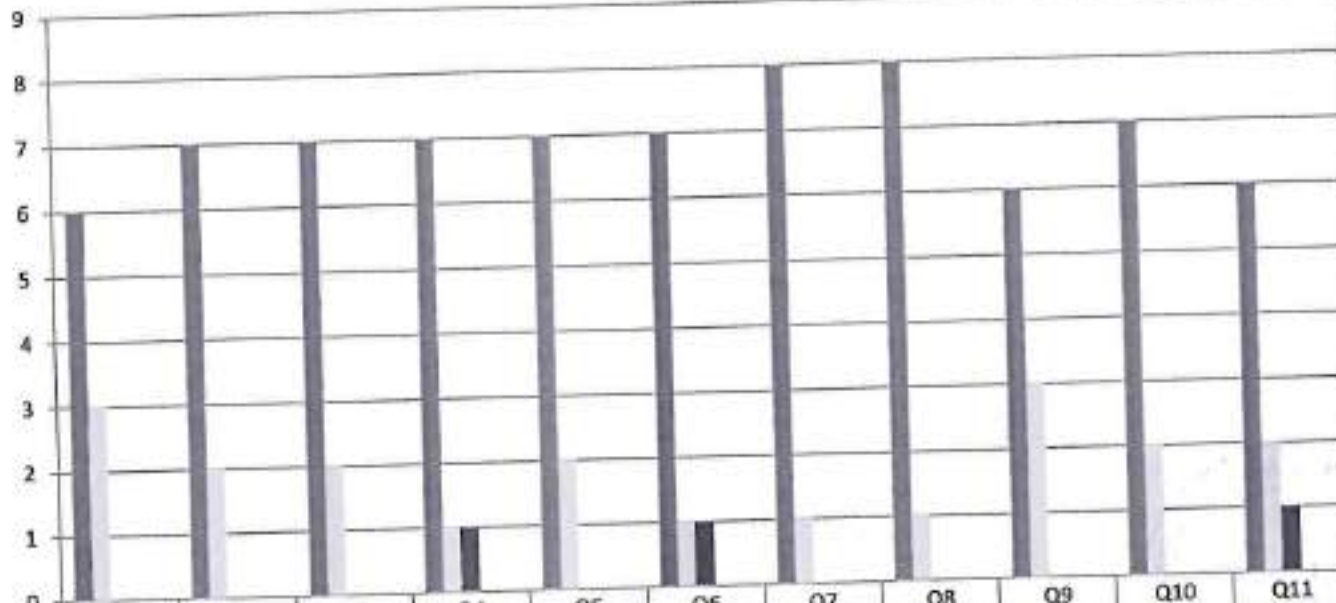
PRINCE SHRI VENKATESWARA ARTS AND SCIENCE COLLEGE

Gowrivakkam, Chennai-600073.

Affiliated to University of Madras, ISO 9001:2015 Certified Institution

**ALUMNI FEEDBACK ON CURRICULUM, INFRASTRUCTURE
FACILITIES & AMBIENCE OF THE INSTITUTION - 2020-2021**

M.Sc. BIOCHEMISTRY
(NUMBER OF RESPONDENTS - 9)



B. Kalpana
PRINCIPAL



PRINCE SHRI VENKATESWARA ARTS AND SCIENCE COLLEGE

Gowrivaldikam, Chennai-600073

Affiliated to University of Madras, ISO 9001:2015 Certified Institution

ALUMNI FEEDBACK ON CURRICULUM, INFRASTRUCTURE FACILITIES & AMBIENCE OF THE INSTITUTION – ANALYSIS REPORT

Academic Year 2020-21
Department M.Sc. Biotechnology
Number of Respondents 10

Feedback Rate: Strongly Agree (5), Agree (4), Neutral (3), Disagree (2), Strongly Disagree (1)

S. No	Feedback on Curriculum, infrastructure facilities & ambience of the institution	5	4	3	2	1
1	Rate the appropriateness of curriculum and syllabus content for placement/ higher education. (Related to curriculum)	7	2	0	1	0
2	Rate the effectiveness of the academic curriculum for the development of analytical and problem-solving skills (Related to curriculum)	7	2	1	0	0
3	Rate the curriculum and institution activities for making the students industry ready at the end of the programme (Related to curriculum)	8	1	1	0	0
4	Rate the curriculum for the improvement of creative thinking skills and knowledge / scope of the syllabus in enhancing entrepreneurship skills/ lifelong learning/ human values and ethics. (Related to Academic Performance)	9	1	0	0	0
5	Rate the faculty and the teaching learning process in the department and institution (Related to curriculum and academic performance)	10	0	0	0	0



PRINCE SHRI VENKATESWARA ARTS AND SCIENCE COLLEGE

Gowrivakkam, Chennai-600073

Affiliated to University of Madras. ISO 9001:2015 Certified Institution

6	Rate the placement opportunities and career guidance programs provided by the Placement Cell (Related to academic performance)	9	0	0	1	0
7	Rate the laboratory facilities and the laboratory course experiments relevancy to real time applications (Related to infrastructure and ambience of the institution)	8	2	0	0	0
8	Rate the adequacy of library and research Centre facilities (Related to infrastructure of the institution)	7	3	0	0	0
9	Rate the sports and cultural facilities and the related activities by the institution (Related to infrastructure and ambience of the institution)	8	1	1	0	0
10	Rate the opportunities provided by the institute to participate in co-curricular and extracurricular activities (Related to ambience of the institution)	8	0	1	1	0
11	Rate the conducive and peaceful overall environment provided by the institution (Related to ambience of the institution)	7	2	1	0	0



B. Kalpana
PRINCIPAL
PRINCE SHRI VENKATESHWARA
ARTS AND SCIENCE COLLEGE
GOWRIVAKKAM, CHENNAI-600 073.



PRINCE SHRI VENKATESWARA ARTS AND SCIENCE COLLEGE

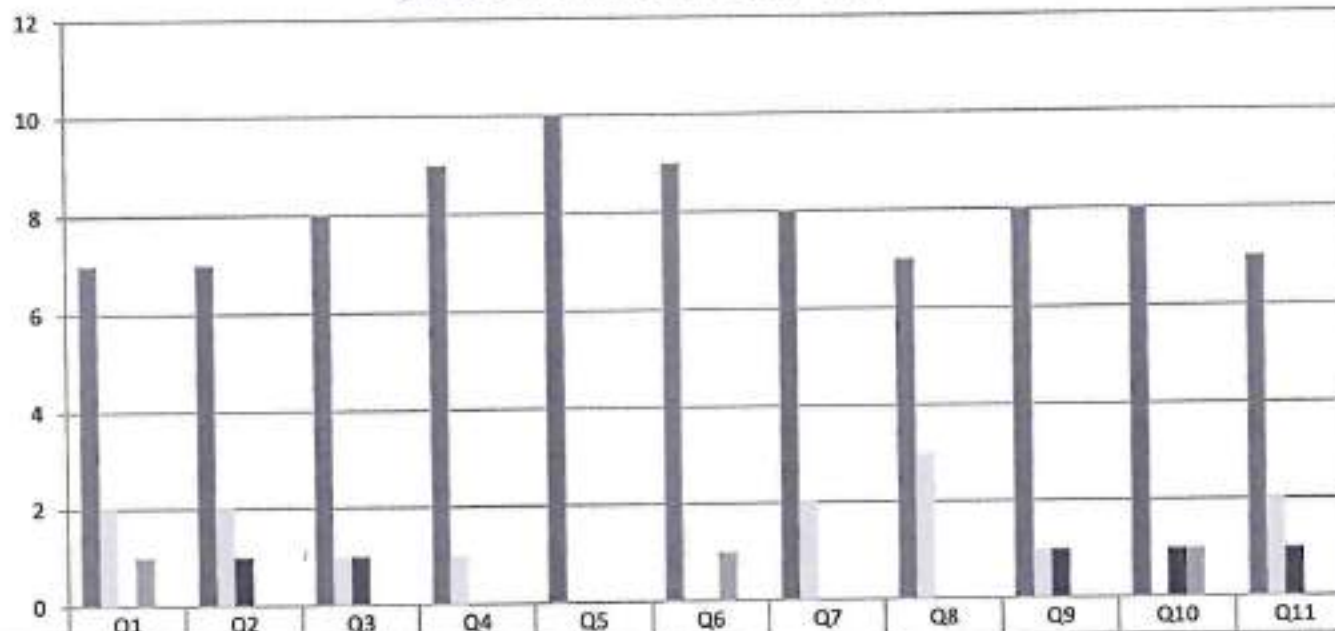
Gowrivakkam, Chennai-600073.

Affiliated to University of Madras, ISO 9001:2015 Certified Institution

**ALUMNI FEEDBACK ON CURRICULUM, INFRASTRUCTURE
FACILITIES & AMBIENCE OF THE INSTITUTION - 2020-2021**

M.Sc. BIOTECHNOLOGY

(NUMBER OF RESPONDENTS - 10)



	Q1	Q2	Q3	Q4	Q5	Q6	Q7	Q8	Q9	Q10	Q11
Strongly Agree (5)	7	7	8	9	10	9	8	7	8	8	7
Agree (4)	2	2	1	1	0	0	2	3	1	0	2
Neutral (3)	0	1	1	0	0	0	0	0	1	1	1
Disagree (2)	1	0	0	0	0	1	0	0	0	1	0
Strongly Disagree (1)	0	0	0	0	0	0	0	0	0	0	0



B. Kalpana
PRINCIPAL

PRINCE SHRI VENKATESWARA
ARTS AND SCIENCE COLLEGE
GOWRIVAKKAM, CHENNAI-600 073.